

The Checker

Official Publication of the
Central Florida Region
Sports Car Club of America
Volume 49, Issue 2
February 2007

Just



Another



Day



in Paradise

Contact Information

Governors and Officials

BOG Chair — Fran Martin
2504 Overlake Av. Orlando 32806
407-851-7157 ph. 407-855-4134 fax
fgmartin@worldnet.att.net

District 1 — Gary Steffen
10701 Snug Harbor Rd St. Pete 33702
727-579-4795 stef143@msn.com

District 2— Craig Pearce
16132 Ivy Lake Dr. Odessa 33556
813-920-3463 hm, 813-253-0111 wk
fprod1275@tampabay.rr.com

District 3 — Bill Martin
2504 Overlake Av. Orlando 32806
407-851-7157 ph. 407-855-4134 fax
whmartin@worldnet.att.net

District 4 — Lyn Watts
17141 NE 37 Street Silver Springs 34488
352-625-2540 lwatts@checknbd.com

District 5 — Peter E. Lier
2502 Pine Ave. Vero Beach 32960
772-473-2001 blkgt3@yahoo.com

District 6 — Chuck Dawson
5505 US 27S, Sebring 33870
863-314-9200 (Bus) dmotor@strato.net

District 7 — Steve Sanford
665 Quercus St Port Orange 32127
386-304-7942 hm 386- 299-1706 cell
stephenrsanford@bellsouth.net

District 8 — Ron Camacho
18172 Ackerman Ave,
Port Charlotte 33948 941-743-4576
quasimacho@aol.com

District 9 — David Theen
916 Bayshore Dr, Englewood 34223 941-
474-3608 davetheen@comcast.net

Regional Executive — Rick Balderson
123 Duncan Trail Longwood 32779
Wk:407-310-4397 Hm:407-788-2063
rickbalderson@yahoo.com

Assistant R.E. — David Theen
(See District 9)

Competition Coordinator — Bill Martin
(See District 3)

Membership — Joyce Hayward
457 Drage Drive, Apopka 32703
407-884-7889
joycehscga@cfl.rr.com

Merchandise — Fran Martin
(see District 3)

Race Worker Licensing — Gail Kasson
3132 Bordeaux Lane
Clearwater 33759 727-791-3871
gailkasson@aol.com

Secretary — Carol Gavaletz
702 E. Gate Dr. Safety Harbor, 34695
727-480-1933 cfrsec@yahoo.com

Treasurer — Greg Bennett
711 Mellonville Ave Sanford 32771 407-
328-2892, 407-328-2958 fax
gregscca@bellsouth.net

Financial Advisor — James Magero
941-365-8500 or 1-800-345-0386
james.magero@smithbarney.com

Race Board

Chair — Robin Langlotz 3116 Indian
Drive, Orlando 32812 407-851-2232, 407-
850-2055 fax, rlan107@aol.com

Assistant Chair — Robin Ragaglia
19214 Timber Pine Lane, Orlando, 32833,
407-568-6902 cpapita@aol.com

Beverage — Ted & Jean Garrod
407-847-4454

Chaplain — Steve Kearney 863-425-
5684 RaceRev@tampabay.rr.com

Course Marshal — Bob Anthony 863-
533-9525 ranthony@gte.net

Daytona Event Chair — Bill Cannons
386-322-3663

Driver Instructor — David Boles 321-
254-8014 david@bolesmotorsports.com

Driver's Rep — Beau Gabel
407-365-7219

Driver's Rep SARRC — Mike Schmidt
(407) 438-9676 Home (407) 353-7574
Cell DSR35@Bellsouth.net

Driver's Rep Vintage— Bob Shafer 863-
465-5565 shafer134@yahoo.com

Equipment/Flagging — Richard Kasson 727-254-4313
RichSCCA@tampabay.rr.com

Grid Chief— Sammi Ronshausen 727-
821-4407 sammi@tampabay.rr.com

Medical Director — Dave Langston

MIS — John Giordano
321-728-9964

Pace Car — Jack Ragaglia
407-568-6902 Pace1cfr@aol.com

Paddock Marshal — Charlie Leonard
941-729-1537 charlieleonard@aol.com

Photo ID — Patti Socher 321-223-8652
rvidys@aol.com

Pits Chief — Gloria Theen 941-474-
3608 gloriatheen@comcast.net

Region Points Keeper — Jack Ragaglia
407-568-6902 Pace1cfr@aol.com

Registrar — Deanna Harry
863-382-4226 sccacfr@aol.com

Starter — Larry Kurkowski
904-220-0160 kurkowsl@bellsouth.net

Sebring Event Coordinator — Charlene Gunn 407-851-2232
hootieracing@aol.com

Steward Rep. — TBD

St. Pete GP Coordinator — Gary Steffen 727-579-4795 stef143@webtv.net

Sound Control — Berta Sager 863-465-
0065 0065 sager001@comcast.net

Tech — Bill Eveland 863-701-0995
ce147@aol.com

Timing & Scoring — Lee Shafer 863-
465-5565 racer_mom@earthlink.net

Trophies — Tucker and Amy Alford
941-473-0708
sales@venwoodawards.com

Novice Permits

Joyce Hayward, 407-884-7889
457 Drage Drive, Apopka 32703
joycehscga@cfl.rr.com

SOLO II Board

Solo II Chairperson — Tim Reardon
1550 Silk Oaks Ave Titusville 32796 321-
268-2940 reardo_t@bellsouth.net

Registrar — Tim Reardon

Safety Steward — Gary Merideth 407-
299-0708

Trophy — Glenn Forrester

Timing and Scoring — Dat Nguyen

West Coast Coordinator — Albert Popalis 813-986-5722

West Coast Registrar — Jim Bledsoe
jim@acceleration.net

Gainesville Coordinator — Bock Folken 352-332-9365 cccbock@aol.com

RallyCross

Interested? Contact **Rick Balderson** 123
Duncan Trail Longwood 32779 Wk:407-
310-4397 Hm:407-788-2063
rickbalderson@yahoo.com

Area 3/SEDiv Officials

Area 12 Director — Kaye Fairer
145 Fenton Place
Danville, VA 24541-3633
434-793-4235
kfairer@adelphia.net

Area 3 Director — KP Jones
3344 Oakdale Place
The Villages, FL 32162 (352) 751-5049
kjones@scca.com

Driver Licensing Administrator — David Boles
321-254-1344 W 321-254-8014 H
david@bolesmotorsports.com

Checker & Web Sites:

Checker Editor — Harriet Watkins
407-323-8148 checker@clearlysaid.com

Webmaster — Craig Zeigler
941-321-4693 craig@cfrscca.net

Solo Webmaster — Phil Barone
webmaster@cfrsolo2.com

www.CFRSCCA.org
www.CFRSCCA.net (interactive site)
www.CFRSOLO2.com

On the Cover:

Crowds at the Driver's Meeting

at the Sebring Winter National.
Photo by Darryl Gray.



2007 Event Schedule

NOTE: The events listed here were copied from the SEDIV Racing site (sedivracing.org). SEDIV Racing does not notify The Checker of any updates to the calendar so you MUST refer to that site for corrections!

January

- 6-7 National Race - Sebring, Full Course**
25-28 24 Hours of Daytona
13-14 National FI Homestead floridaregion-scca.com
20-21 SEDIV Annual Meeting Jekyll Island www.sedivracing.org

February

- 24-25 Regional Race/SARRC - Sebring, Short Course**
1-3 SCCA National Convention San Antonio www.scca.com
3 ECR/FES Enduro (one day only) Fla Moroso floridaregionscca.com
8-11 Double Drivers' School Bucc Roebling Road www.buccaneerregion.org
17-18 President's National CCar Carolina Motorsports Park www.ccrscca.com
24-25 SARRC/ECR/Pro-IT/PDX Atl Road Atlanta www.atl-scca.org

March

- 14-17 12 Hours of Sebring**
30-31, Apr. 1 St. Petersburg Grand Prix
3-4 Driver School/Regional NCar Rockingham www.ncrscca.com
3-4 Tom Nehl National Bucc Roebling Road www.buccaneerregion.org
17-18 SARRC/ECR/ECR NCar VIR www.ncr-scca.com
24-25 National/Pro IT/PDX Atl Road Atlanta www.atl-scca.org
31-Apr 1 Buck Muse Memorial-SARRC/ SARRC SCar Carolina Motorsports Park www.scr-scca.com

April

- 7-8 Spring Fling Track Trials/PDX CCar Carolina Motorsports Park www.ccrscca.com
13-14 Kumho Tire 12 Hour Race Fla Homestead floridaregionscca.com
21-22 PDX/Track Trials NCar Rockingham www.ncrscca.com
28-29 Jim Stark-SARRC/SARRC Bucc Roebling www.buccaneerregion.org

May

- 5-6 National/Regional Race - Daytona**
19-20 Driver School - Daytona
11-13 The Al Fairer SARRC/MARRS Challenge SARRC/SARRC/MARRS/MARRS NCar VIR www.ncrscca.com
12-13 Palm Beach Classic/SARRC Fla Moroso floridaregionscca.com
26-28 Memorial Monster SARRC/SARRC ECR/CCPS CCar Carolina Motorsports Park www.ccrscca.com

June

- 2-3 Regional Race/Solo II - Sebring, Full Course**
2-3 National/Pro IT/PDX Atl Road Atlanta www.atl-scca.org
9-10 Driver's School/ECR/ECR/FES Fla Homestead floridaregionscca.com
16-17 SARRC/ECR/CCPS CCar Lowes' Motor Speedway www.ccrscca.com
30- Jul 1 PDX/CCPS NCR Rockingham www.ncr-scca.com
29 - Jul 1 Lou Ella Cook Double National SEDiv Roebling www.sedivracing.org

July

- 5 Brumos Porsche 250 - Daytona**
14-15 Driver School - Sebring, Short Course
7-8 SARRC/SARRC Al Barber Motorsports Park
21-22 SARRC/ECR/Pro-IT/PDX Atl Road Atlanta www.atl-scca.org
28 Mid-Year Meeting Atlanta

August

- 4-5 Regional Race - Daytona**
4-5 Blue Ridge Divisional Hill Climb CCar Sparta, NC www.blueridgehillclimb.com
11-12 National/CCPS/PRO IT NCR VIR www.ncr-scca.com

When & Where





September

- 1-2 Regional Race - Sebring, Full Course**
- 29-30 Regional Race - Daytona**
- 1-2 SARRC/SARRC Atl Nashville, Tn
www.atl-scca.org
- 8-9 Restricted Regional Bucc Roebling Road www.buccaneerregion.org
- 15-16 Fall Festival PDX CCar Carolina Motorsports Park www.ccr-scca.com
- 22-23 SARRC Invitational Challenge SEDIV Roebling Road www.sediv-racing.org
- 29-30 Regional/FES Night Enduro Fla Moroso floridaregionscca.com

- 29-30 Divisional HillClimb TVR Scottsboro, AL www.crowmountain-hillclimb.org

October 2007

- 12-14 Porsche Club Races - Daytona**
- 20-21 Regional Race/Solo II/2008 SARRC - Sebring, Full Course**
- 8-14 Runoffs Nat Heartland Park - Topeka www.scca.com
- 27-28 2008 SARRC/2007 ECR/CCPS NCR VIR www.ncrscca.com

November 2007

- 1-4 Porsche Rennsport - Daytona**
- 8-11 HSR Finale - Daytona**

24-25 Turkey Trot - Sebring, Full Course

- 3 13 Hour Enduro NCR VIR
www.ncrscca.com
- 3-4 Track Trials Bucc Roebling Road
www.buccaneerregion.org
- 9-11 ARRC/PDX Atl Road Atlanta
www.atl-scca.org
- 17-18 2008 National Fla Moroso floridaregionscca.com
- 24-25 2008 SARRC/2007 ECR CCR Carolina Motorsports Park
www.ccrscca.com

December

CFR Annual Meeting and Banquet

SEDIV Contacts

Scheduling Rep: 770-831-0277 Sharon Rollow sharonrollow@bellsouth.net

Registrars/Area Directors/Stewards

Atlanta	Road Atlanta	800-866-4744	www.atl-scca.org
Alabama	Barber Motorsports	800-525-7222	www.alscca.org
Buccaneer	Roebling Road - Karen Drum	704-827-8788	www.buccaneerregion.org
Central Carolina	Charlotte/Kershaw - Martin Bartlett	803-831-2523	www.ccrscca.com
Central Florida	Sebring/Daytona -Deanna Harry	863-382-4226	www.cfrscca.org
Florida	Moroso/Homestead - Ellen Lee	954 491-0719	www.floridaregionscca.com
North Carolina	VIR/Rockingham - Ginny Condrey	800-342-7390	www.ncrscca.com
South Carolina	Roebling Road /Kershaw - Wanda Cecil	803-714-9797	www.scr-scca.com
Road Rally	Bob Ricker	954-782-2829	www.frssca@bellsouth.net
Rally Cross	David Brooks	423-842-4119	rxmomentum@earthlink.com
Steward Solo II	Karl Rickert	912-729-6890	www.sedivsolo2.com
Area 3 Director	K. P. Jones	352 751-5049	kp@thevillages.net
Area 12 Director	Kaye Fairer	434-793-4235	kfairer@adelphia.net
Executive Steward	Fred Schmucker	850-385-0585	fredschmucker@hotmail.com
Deputy Steward	Rick Mitchell	706-579-2320	sediv_deputy_exec@yahoo.com
Deputy Steward	Pete Magnuson	386-428-5313	loosmoos1@cfl.rr.com

District Information

Meeting Times and Places:

See inside front cover for contact information.

District 1 — 2nd Tuesday 7:30 p.m., Quaker Steak and Lube, 10400 49 St. N. Pinellas Park, just north of U.S. 19.

District 2 — 4th Wednesday Beef O'Brady's 5025 Fowler Avenue; Tampa.

District 3 — 2nd Monday 8:00 PM Rossi's Pizza & Pasta 5919 South Orange Blossom Trail Orlando 321-228-0430.

District 4 — Contact Governor for details.

District 5 — 2nd Monday Dinner at 6:30 PM, Meeting at 7:30 Charlie & Jake's 6300 N. Wickham Road, Melbourne.

District 6 — 3rd Thursday, Dinner at 7:00 PM, Meeting at 7:45 Caddyshack 3122 Golfview Road, Sebring.

District 7 — Meetings alternate on the 3rd Thursday of each month. Dinner at 6:00PM, meeting at 7:00PM — east side location is River Grille, 950 N. US Hwy 1, Ormond Beach; west

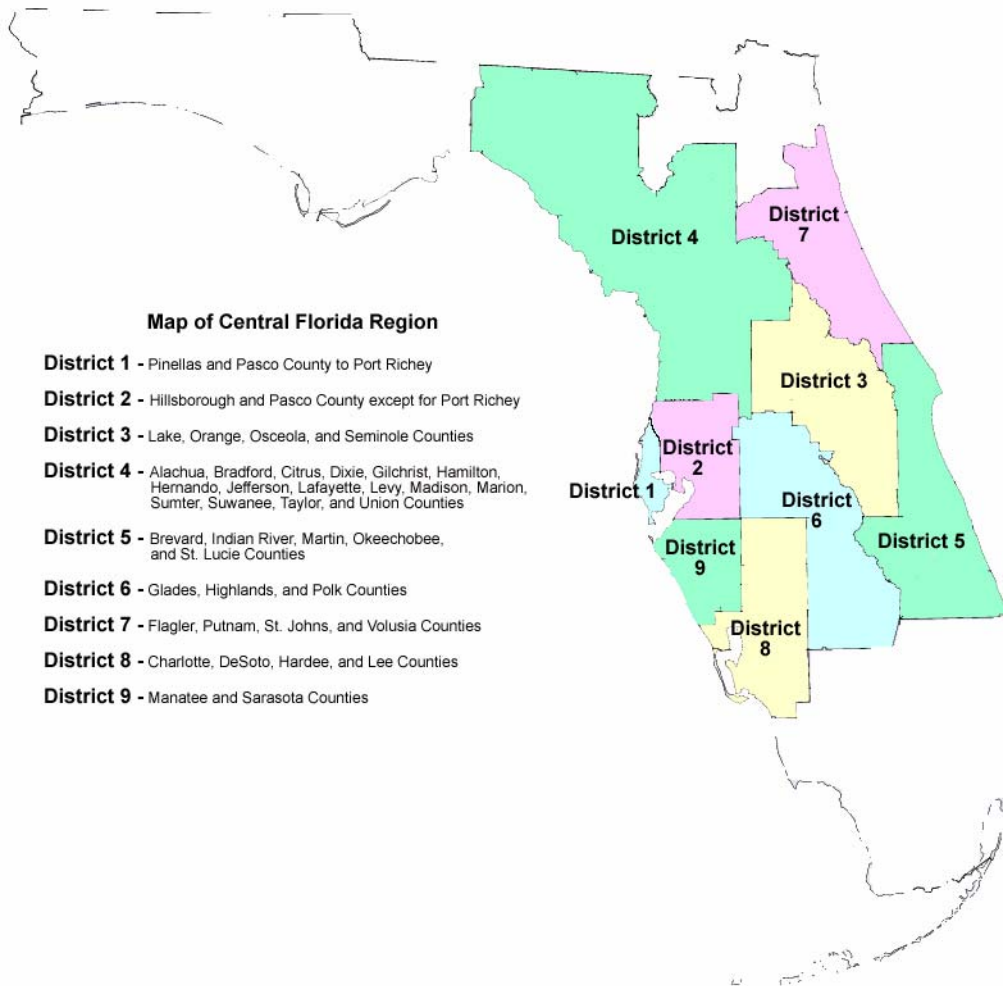
side is Stavros, 155 S. US Hwy 17-92, DeBary. Contact district governor for directions.

District 8 — 1st Wednesday Uno's Chicago Grill Daniels Parkway, Fort Myers. **NEW!**

District 9 — Call Governor for details.

New to the club?

For general information on the membership or meetings please call your district governor. Or, if you want to know about a specific "specialty" call the "chief" listed on the inside cover.



Welcome New Members!

*Members joining Central Florida
Region in January 2007:*

Here is a list of New Members who joined this
month (at Sebring).

<i>New Member</i>	<i>Home Town</i>
David Barton	Melbourne
Ted Parker	Sarasota
Vince Christunas	Vero Beach
Robert Roche	Lakeland
Ronald Dischert	River Ranch
Marilyn Schillinger	Cocoa
Robert Edmonds	Orlando
Richard Sgrillo	Lakeland
Rick Holman	New Castle, Ont.
Richard Spaeth	Lakeland
Eric Jensen	Apopka
Nick Spaeth	Lakeland
Jim Johnson	Brandon
Alan Stephens	New Castle, Ont
Sebastian Jubelin	Montreal, Quebec
Vann Turner, Jr	Orlando
Mike LeGallic	New Castle, Ont.
Brian Warner	Fort Pierce
Andrew Lovatt	New Castle, Ont
Debbie Williams-Stratton	Orlando
Adam Marchitto	Brossard, Quebec
Graeme Young	New Castle, Ont
Remco Mutsaerts	New Castle, Ont
Charles Marshall	Stuart

Club News



District News

District 1

Over 50 people attended the January meeting at Quaker Steak where we like to honor local racers who have won their class.

In attendance was 2nd generation racer Derek Lieb who took 1st place in F500 . Derek's grandfather was also in attendance which made it feel extra special. Miki Moerwald took 2nd place in ITB where she has been on the podium for 3 years straight. Also in the house was Corvette racer Ken

Hazelton who was honored for his 4 hr enduro win at the recent HSR race at Sebring. Congratulations to all of you for your hard earned efforts.

There was a great worker turnout for the January national race but still there are some glitches with the gas card program. Several people complained of the computer registration and wished there was an easier way. Hopefully we can take positive steps and not make it so complicated that

Gary Steffan

attending workers feel alienated and everyone receives one.

Its off to the PRO races for now and maybe the weather stays pleasant for the Daytona 24 hr. race. We have a large amount of visiting workers from the north and we want to show them why the racing is so fine in the Florida sunshine! (sic) . Till next time, take care.

District 3

District 3's first meeting of 2007 at Rossi's Pizza on S. Orange Blossom Trail was rather lightly attended...could have had something to do with that little football game between the Buckeyes and Gators. Or that many of our usual regulars were still recuperating from the previous weekend's National at Sebring which brought 333 entries from all over the

U.S. to enjoy temperatures in the mid 80's. Not bad for January weather.

Gov. Bill Martin reported our activities are at Daytona are on schedule. We have already supported Grand Am Testing Jan. 4th-5th-6th and have the Daytona 24 coming up Jan. 27-28. Following that is Indy Car Spring Training Jan. 31-Feb. 1st (Wed-Thurs). Thanks in advance to everyone who

Fran Martin

volunteered. Contracts with Sebring and for the St. Pete Grand Prix are complete and signed and the Daytona Contract has been submitted. The meeting was adjourned following our door prize raffle, and a little bench racing.

See you at the Races!

District 8

We had a small turnout at Thursday's meeting. Might be a factor of burnout from a combination of the holidays and the last weekend. None the less; the 8 that did attend voted in favor of moving

our monthly meeting to the 1st Wednesday of the month. The meeting place stays the same (Uno's in Ft. Myers).

Ron Camacho

The highlight of our next meeting will be a humorous insight into the Do's and Don'ts of maintaining crew members.

RE Report

I hope you all are "picked-up" from the holidays and are ready to take on the 2007 edition of CFR goes racin'. There are plenty of opportunities for YOU to participate in Your club, at almost all levels, so don't be shy, pick a name from the list inside the front cover of the checker, give them a call, and join in the fun.

The January National at Sebring was well attended with 330 competitors taking to the Long course. The weather steward did a much better job this year; it was chamber of commerce quality for

the entire weekend. More importantly, we did not use the helicopter to transport anyone anywhere, always a good thing.

Last year we had only 2 RallyCross events in Deland, this year we should see some more events as we have a new volunteer in Brad Gooch to take over as the RallyCross Chair. His contact info is 338 Shadow Blvd N, Longwood, and FL 32779, Ph 407-718-4629, E-mail geologydude@gmail.com. Good Luck to Brad, I'm sure 2007 will prove to be an interesting year for him.

Rick Balderson

Corner workers, be sure to get to your chief and sign up for the 12 hours and the St. Pete GP, they will be here before you know it.

Drivers, be sure to take advantage of the new window on your entry form, the worker fund donations from this donation will be used to supplement worker rooms at YOUR events, and as you know, volunteer workers make this work.

Next issue will include a recap of the SEDiv and SCCA National meetings and banquets.



Membership Report

Wow? Another month gone by already!. Writing a monthly column keeps you busy.

I have been busy working on the SEDIV Convention coming up next weekend and in my next report, I will tell you all about it. If you have never been to one you should try and make the next one. The third weekend in January is the date and the place is Jekyll Island, GA.

Last weekend I attended the January National at Sebring. It was a wonderful weekend with glorious sunshine that I am sure our guests from the northern areas enjoyed along with us. The race was very well attended, as usual, and the racing was superb and there were

no serious incidents on the track. That's the kind of weekend we all enjoy.

I brought home with me 38 new member applications. They weren't all for CFR but the majority were. To all of you new members - if you don't receive your card from the National Office, or if you have any questions regarding your new membership, please get in touch with me.

Three members that we all missed at the recent events are Don Sommers, who is at home recuperating from a long illness. Hey Don!! We sure miss you.

And Ginny Amato who is recuperating

from hip surgery. She had an accident while vacationing in St Augustine over the New Year holiday. We miss you Ginny. Get well soon. And our Treasurer, Greg Bennett, who we hope is feeling better and will be back to the events soon.

There are a lot of guys and gals getting ready to go to Driver School. The first one in the Division is the Double School at Roebing Road. I have been busy issuing Novice Permits to CFR members getting ready to go. February 8 - 11 are the dates.

Contact Mike Walters, Sr. at awalt84@bellsouth.net for an entry.

TILL NEXT MONTH - ENJOY

Joyce Hayward

Central Florida Region - Hall of Fame Candidates

The following list of names has current or previous members of CFR. They have been proposed as candidates for the CFR Hall of Fame award. These and any other submitted names may be on next year's ballot ONLY IF the person nominating the candidate will write a short paragraph about the candidate's contributions to CFR. That way when the ballot is sent to the folks eligible to vote there will be some background available on the candidates.

We will attempt to collect additional information regarding the candidates

original date of membership, positions and licenses held once we receive a nomination.

Any CFR member can nominate a candidate for the CFR Hall of Fame.

Your CFR Hall of Fame Committee:

Sammi Ronshausen, Bob Sieck, Russ Smith

Potential Candidates - partial list

Fred Amundrud

Bob Cassidy
Julian Graham
Richard Gauthier
Don Johnson
Terry Kluesner
Phil Lowe
George Maxwell
Kent McBee
O.E "Penny" Pennington
Bill Phillips
John Schnedl
Jo Schnedl
Jim Sleeth
Wanda Sleeth
Dick Valentine Sr.

2007 GCRs

2007 GCRs are now available in limited supply from CFR Merchandise. Per SCCA Club Racing Department, complimentary copies of the latest edition of the GCR are included in the the annual license fee (\$75) for

National and Regional Competition Licenses as well as Novice Permits (\$110).

To Order - Call 407-851-7157; email fgmartin@att.net or snail mail to Fran Martin, Merchandise Chm., 2504

Overlake Ave., Orlando, FL 32806. Provide your name, mailing address and phone number. GCR cost is \$25 + shipping and handling. Invoice will be included in your shipment.

Letter

Yes, this is another of those “sappy” letters about the SCCA “family”. It is amazing, however, how many times in my 30+ years in SCCA that I’ve seen this phenomenon in action.

On Friday night at the Sebring National, my wife, Judy, received the news that her mother had died. It was not entirely unexpected since she had been in hospice for several months.

Immediately, our little group of friends took over. Ellen Leonard told Judy to

take the Jeep she had driven over to get back home. Paul Mevoli was on the phone arranging a flight out the next day. He even remembered to get the discount for bereavement.

Judy told me to stay at the race and get a flight out mid-week while she got things organized. Is that a great wife or what?

The rest of the weekend I could not believe how all the friends’ wives mothered me. It was, “Did you take

your pills? Did you put sunblock on? Is there water in the dog’s dishes?” I even got, “What would Judy be reminding you of now?”

Judy and I want to thank Charlie and Ellen Leonard, Paul and Teri Mevoli, Jim and Gwen Megero, Terry and Karen Galvin, and everyone who helped or offered condolences that weekend or since.

Van and Judy McDonald

In Memoriam



We remember Carl Sloan, of SAS Racing, who unexpectedly passed away on December 23, 2006. Carl was a long standing CFR member who provided engine building services and trackside support to many Mazda racing teams. Carl is credited with building the first Mazda 3 rotor peripheral port engine which successfully completed the 24 hours of Daytona in 2000. Carl Sloan’s untimely passing is a tragic loss to the Mazda

racing community and those who knew him.

— Steve Goldin

The Central Florida Region Of Sports Car Club Of America

*Presents A West Coast Event / Southeast Divisional
SoloTrials Event*

GAINESVILLE RACEWAY March 24 and 25, 2007

EVENT SITE — Gainesville Raceway, Gainesville, Florida

Traveling South on I-75, take exit #399 and turn left onto US 441 S. Go approx. 12 miles and turn left on CR 121. In approx. 3 miles turn right onto CR231. In approx. 3 miles turn right onto 156th Ave (CR 340). In 3.8 miles take right fork onto CR 225, travel approx. 2.7 miles to racetrack.

Traveling North on I-75 take exit #390, 39th Ave (CR222) turn right heading East, to Waldo Rd. (SR 24), turn left. Turn left on 53rd Ave. and make the immediate right on to CR 225, go 3 ½ miles to track.

HOTEL HEADQUARTERS

(cut off date March 1, 2007) COMFORT INN WEST
3440 Southwest 40th Blvd.
Gainesville, Florida 32608
Phone: 1-352-264-9996

From the South - From I-75 take Exit 384 - SW Archer Rd. (CR-24E) Ramp. Turn right onto SW Archer Rd. Turn left onto SW 40th Blvd.

From the North - Take I-75 S to exit 384 - SW Archer Rd. (CR-24E). Turn left onto SW Archer Rd. Go NE to SW 40th Blvd. Turn left onto SW 40th Blvd. Be to ask for the SCCA rate of \$85.95 for double and \$90.95 for a king. There will be a tech session here from 6-8 pm on Friday.

FEES

\$80, Must Register before the event. Payment is to be sent in at the time of registration. Deadline is March 16, 2007. \$30 late fee for on site registration. (if space is available)

SCHEDULE OF EVENTS: (Come early to walk the course.)

*Saturday - March 24,
2007 (Day 1)*

<i>From:</i>	<i>To:</i>	
7:30am	9:00am	Sign in and Tech
8:00am	8:45am	Course Open for Walking
8:45am	9:00am	Drivers Meeting / Assign Workers
9:15am	10:45am	Drive-thru and practice-all participants
11:00am	5:00pm(est.)	Competition.

*Sunday, March 25,
2007 (Day 2):*

<i>From:</i>	<i>To:</i>
N/A	N/A
N/A	N/A
8:30am	9:00am
N/A	N/A
9:00am	2:00pm(est.)

NOTE:

This is a 2-day event. You must be present and sign-in on Saturday to compete on Sunday!

Come early to walk the course. Lunch is NOT being provided. We will schedule 3-4 run groups with a gap between your work and run times, so there will be no lunch break - and no chance to walk the course once the event has begun. Arrive early!



REGISTRATION:

Must send registration info along with check to:

Cheryl Poindexter, Registrar
677 Comanche Ave
Melbourne, FL 32935

Deadline is March 16, 2007

All SCCA membership numbers will be verified! Drivers under 18 years old should review Appendix D, Section VII, Entrant Eligibility of the rulebook. No more than 2 drivers per vehicle, except by prior arrangement. The \$80 payment covers both days. Cash and checks only.

IMPORTANT INFORMATION:

- You must be an SCCA member in order to compete!
- ALL DRIVERS MUST WORK AT THE EVENT!
- REGISTER EARLY. The event organizers are contemplating limiting the participation to 60 drivers in order to allow each participant plenty of track time
- All participants must hold a FULL state issued drivers license and be 16 or older.
- Events conducted under the 2007 SCCA Solo Trials rules and CFR/SCCA Solo Supplemental Regulations
- All regular 2007 SCCA Solo Open and Ladies classes, plus region Solo 2 Expert. No Novice class will be available. Experienced drivers only!
- Event trophies will be distributed at the close of the event.
- SEDiv Solo 1 Championship Points will be awarded. Those drivers wishing to receive points for this event are asked to use all Safety Equipment normally required for Solo I.
- SNELL 95, M95 (or later) approved helmets are required; limited number of loaners are available. DOT-only helmets are NOT acceptable.
- For Solo 2 vehicles: Seat belts are required in all cars originally

equipped with them. Vehicles must pass safety inspection. Empty vehicle of extraneous gear before Tech Inspection. It is the driver's responsibility to know their car class; rulebooks will be available for sale at the event. More details on the following page.

- All entrants are required to work course assignments. Some work positions are available before and/or after the event. Contact Steve or Garry for details.

FOR MORE INFORMATION:

CFR Solo 2 Website:
www.cfrsolo2.com

or call:

Garry Poindexter - 321-259-6181

Or Email:

pylonracer99@att.net

FREQUENTLY ASKED QUESTIONS

Read the SOLO TRIALS RULES ON LINE which lists the special safety requirements for vehicles. Detailed below are the most common questions asked by Solo 2 competitors interested in competing.

- All SOLO 2 Prepared and Modified cars must have roll bars or cages.
- Drivers of all Solo 2 Prepared and Modified cars need a racing harness and it is highly recommended that they have a flame-retardant driving suit, gloves (etc) and a fire extinguisher.
- All Solo 2 Stock and Street Prepared "open Cars" (i.e. convertibles or targas, but not T-tops also need a roll bar or cage, unless a bolt-on hardtop is in place and properly secured. This will be checked at Tech inspection. Examples are Miatas and Corvettes. Targa-top cars are considered "open cars", such as the 93+ Supra. Such a

car must have a bolt-on top and it must be in place to participate in this event. (A car with a sunroof or T-top is not considered an "open car".) In addition, drivers of open cars must have a helmet with a face shield or the driver must wear goggles.

- Solo 2 Stock and Street Prepared cars that do NOT have a roll bar or cage may not use upper body restraint systems other than the factory system.
- No karts are allowed to compete at Solo Trial events per rule XI.
- Helmets must be Snell SA95, M95 or later. Loaners (without face shields) are available - bring goggles if you drive an open car!
- All drivers in Solo 2 Stock and Street Prepared must wear 100% cotton (no blends) outer wear that covers neck-to-ankles and neck-to wrists: a long sleeve shirt and long pants.

You must sign in at the event hotel on Friday, March 23rd between 6 pm and 8 pm, or at the event site on Saturday morning, March 24th between 7 am and 8:30 am. There will be no registration or sign-in on Sunday!

Allow plenty of time for tech inspection - remember that if you are not familiar with tech procedures for Solo Trial or Solo 1 events, you may be better off having tech done at the event hotel on Friday night between 6 pm and 8 pm. Check with the front desk to locate event officials.

There is a campground available near Gainesville Raceway, Travelers Campground at I-75 and Exit #399. Their phone number is 386-462-2505 miles. The track does not allow overnight camping.

You will need to go to the Club Racing section of the National site (www.scca.org) and download the **Physical Examination form**. You only need to fill out page two, "Applicant Medical History".



2007 GAINESVILLE SOLO TRIALS SUPPLEMENTAL RULES

IMPORTANT: PLEASE BE AWARE OF THE FACT THAT THIS EVENT MAY BE CANCELLED, IF AND ONLY IF, THE GATOR NATIONALS ARE RAINED OUT ON THE PREVIOUS WEEKEND (MARCH 17 and 18). IF THIS SHOULD OCCUR, YOU WILL RECEIVE YOUR CHECK BACK. THE COMFORT INN IS ALSO ALLOWING US TO CANCEL UP TO 48 HOURS IN ADVANCE. WE WILL KNOW BY MARCH 18TH IF THE EVENT IS CANCELLED. IF IT IS YOU WILL BE NOTIFIED BY EMAIL (OR IF YOU DO NOT HAVE EMAIL, THEN BY TELEPHONE)

Held under the 2007 SCCA Solo Trials Rules, and GCR, except as modified by these Supplemental Rules.

ENTRIES: Double entry (two cars/one driver) and split entries (one car/two drivers) will be permitted. An entry fee of \$80.00, payable to the CFR SCCA accompanied by a completed registration form and medical form, must be delivered to the Registrar on or before 16 March 2007. After this date, a late fee of \$30.00 will be charged. Entries may be limited to the first 60 paid entries.

REGISTRAR: CHERYL POINDEXTER, 677 Comanche Ave, Melbourne FL 32935 (321-259-6181) (No calls after 9 PM EST)

ELIGIBILITY: Must be an SCCA member and hold a FULL state issued drivers license and be 16 or older.

VEHICLE IDENTIFICATION: As per Solo Rules. Permanent numbers will be issued first and will be held until March 16. All other Numbers will be issued on a first come first serve basis.

CARS: Open to all automobiles conforming to regulations of SCCA Solo Rules and the GCR, 2007 editions. A Specials class and Street Prepared classes will be allowed as long as Solo I Safety regulations are met. Solo I Logbooks will be required.

FAMILIARIZATION LAPS: Each driver will be allowed several laps of course familiarization. These will consist of groups of cars being led around the course by a pace car. Passengers, competitors for instructional rides, will only be allowed in cars that have 2 SEATS and the appropriate belts. Passing is strictly forbidden. Vehicles other than entered race cars will not be allowed at this time. If a driver is having extreme difficulty in navigating the course, he or she is to contact the Chief Steward for further training.

RUNNING ORDER: Cars will be staged by group. Group I will run first, followed by group II etc. All runs will be counted, however, obvious timer errors may be eliminated by the event officials. The best time for both days will determine prize distribution. **PASSING IS PROHIBITED!** If you catch the car in front of you, RAISE YOUR HAND SO A CORNER WORKER CAN SEE - SLOW DOWN AND RETURN TO THE PITS FOR A RE-RUN. Do not approach the other car closer than 3 car lengths. The timer will not reset if you are closer than 5 seconds to the car in front of you - i.e., a rerun will have to be made.

CONDUCT: We are GUESTS at Gainesville Raceway. PLEASE be courteous to the people at the gate and do as they ask. Please observe the speed limit. Any entrants or crew

member caught littering, consuming intoxicants, drugs or acting in a reckless manner in the pit area will be subject to disqualification, and be escorted from the premises.

FACILITIES: Water, Gasoline and Food is available within 5 miles.

LICENSES: Solo I licenses are available by contacting: Steve Tompkins @ (706)891-3314.

REGISTRATION REQUIREMENTS: The following must be shown at registration; CURRENT - Competition License (except solo II competitors), SCCA Membership Card, State Drivers License.

SOUND CONTROL: Will be monitored, drivers will be advised if their cars do not meet GCR limits.

GENERAL:

- Everyone in the Solo area must sign the SCCA Release and Gainesville Track Release.
- Drivers are responsible for the actions of their crew and guests.
- NO PETS ALLOWED!
- Cars may be left at the track overnight on Saturday AT YOUR OWN RISK!
- Children MUST be supervised by an adult at all times.
- Protests will be handled according to the Solo Rulebook.
- Any car spilling fluids, or receiving damage, MUST be checked by a Tech Inspector before running again.
- Tire warm-ups are NOT allowed.
- Trophies - Trophies will be presented at conclusion of the event, they will not be mailed. If you can not stay, designate someone to receive it for you.

ENTRY FEE \$80.00 - -
Late Fee \$30.00 after 3-16-07
Mail: CHERYL POINDEXTER
677 COMANCHE AVE
MELBOURNE, FL 32935

SCCA

OFFICIAL ENTRY FORM

SEDIV SOLO TRIAL

Held under the SCCA SOLO/GCR
Make Check Payable
to:
CFRSCCA

Driver's Name _____ SCCA# _____ Expir. Date _____

Make _____ Model _____ Color _____ Class _____

Perm. No. or No. desired(1) _____ (2) _____ (3) _____ SEDIV POINTS? YES ____ NO ____

Address _____ Phone _____

City _____ State _____ Zip _____

Comp. Lic # _____ Expir. Date _____ Grade _____ Region of Record _____

E Mail address _____

I agree to enter under the current General Competition Rules of the Sports Car Club of America, Solo Trials Rules and the Supplementary Rules pertaining to this event. I further confirm that the car which I have entered complies with all requirements as specified in the GCR/Solo for the class and group in which it is entered above.

DRIVER _____

OFFICIAL USE ONLY
Group # _____
Car # _____
Class _____
Postmark _____
Chk # Amt _____
Cash Amt _____
Driver Lic # _____
Comp Lic # _____
SCCA # _____
Books _____

DRIVER MEDICAL INFORMATION

Driver MUST Complete !!

Drivers Name _____		Age _____
In Emergency Notify _____		Phone _____
Address _____	At Track (Y) (N) _____	
Current Medications _____	Drug Allergies _____	
List any Special Conditions _____	Blood Type _____	
Describe any illness/injuries in past 12 months _____		
Personal Physician _____		
Address _____		Phone _____

Group # _____
Car # _____
Class _____

Answer YES or NO : Contacts _____, Dentures _____, Asthmatic _____, Diabetic _____,
Epileptic _____, Hemophiliac _____, Organ Donor _____, Where _____,
Date last Tetanus Shot _____.



**THE CENTRAL FLORIDA REGION OF THE
SPORTS CAR CLUB OF AMERICA
PRESENTS THE EAST COAST SERIES**

A SOLO II REGIONAL AUTOCROSS

DELAND – February 25, 2007

EVENT SITE:

DELAND AIRPORT– DeLand, FL

From the East - Take I-92 into DeLand. Look for the Sperling Sports Complex sign, which is Marsh Rd. It is before you get to the Airport. Head north on Marsh Rd. Go for 1 mile to 1500 Matt Fair Blvd. Turn left at the big sign for Sperling Sports Complex. Go 3 tenths of a mile to the DeLand Radio Control Club. It is a dirt road on the left just before the Sports Complex.

From Orlando – Take I-4 East to Exit 114 SR-472 to Orange City/DeLand. Turn right on CR-4101. Continue on N. Kepler Rd. Turn left onto US 92 to Marsh Road. Then follow above directions.

Hotels – Holiday Inn (386-738-5200), Comfort Inn \$59.99 (386-736-3100) ask for SCCA rate

SCHEDULE OF EVENTS:

Come early to walk the course.

Sunday 02/25 – Points Event

8:00am-9:00am-Registration

8:00am- 9:30am-Tech. Inspection

8:00am-9:30am-Course Open / Tech Inspection

9:15am-9:30am-Novice Walk thru & Meeting

9:30am-10:00am-Driver's Meeting / Assign Workers

10:00am-4:00pm(est.)-Competition

REGISTRATION:

All fees will be collected at the event. Fees are to be paid per driver, per vehicle. Members: have your membership card available for the registrar at the event.

\$20-SCCA members and host site personnel

\$30-Non-members

Note: \$10 Late fee applied after 9:00, no registration after start of drivers meeting. Pre-register at www.cfrsolo2.com

Join the SCCA at this event and receive a card to get your fourth event **FREE!**

FOOD AVAILABLE FOR PURCHASE ON SITE!!



IMPORTANT INFORMATION:

- Numbers and class letters required on all vehicles. Numbers should be a minimum of 8" high and 1¼" stroke. Class letters should be 4" high. Numbers must be on the car before you go to tech! Blue tape may be used and will be available for \$5 per roll.

- Annual tech will be available to any SCCA member. You can get your car and helmet teched for the 2007 year. You must have permanent magnetic or vinyl numbers.

- All drivers & passengers under 18 must have BOTH parents or legal guardians sign the minor waiver. One parent's signature is sufficient to allow the minor to be on site, but is not sufficient for the minor to be on the course as a driver or passenger.

- Event conducted under the 2007 SCCA Solo II rules and CFR/SCCA Solo II Supplemental Regulations.

- Event is open to all licensed drivers.

- Karts are approved for this site.

- Event trophies will be distributed at the close of the event on Sunday.

- **SNELL 1995** (or later) approved helmets are required; loaners are available. **DOT**-only helmets are **NOT** acceptable.

- Seat belts are required in all cars originally equipped with them. Vehicles must pass a basic safety inspection (battery securely mounted, no loose articles in car, tire tread acceptable and so on).

- Closed toed shoes only! No sandals or bare feet drivers.

- Mufflers are required on all cars. Sound limit is 98db at 75 feet.

- All entrants are required to work course assignments.

- No Nitrous Oxide Bottles allowed anywhere on site!

FOR MORE INFORMATION:

CFR Solo 2 Website: www.cfrsolo2.com

For more info, call:

Tim Reardon - 321-536-1987

Email: reardo_t@bellsouth.net

or

Dat Nguyen – 407-625-5894

Email: dnguyen1@cfl.rr.com



WELCOME IN THE NEW YEAR! Yeah, yeah...I know by the time you read this, you'll have successfully traversed the first month of '07 and are now navigating the second month.

Hopefully you've survived the rigors of the 24 Hour race and I have my fingers crossed, hoping for good weather for you. Reading Rich's Worker Letter, it sounded like you spent the weekend holding a map in your hand so you knew how to get from numerous Point A's to elusive Point B's. But, hey, we thrive on challenges!

KUDOS: to the workers at the National races...and a big atta'boy/gal to Turn 10 staff and rescue troops who handled a nasty crash there with their usual professionalism.

NOW: Don't put away your long jons, layers and survival gear ... the 12 Hours of Sebring is fast approaching. As always, be sure and let the Flag Chief know if you'll be able to work and what days you can be there. Scheduling is a bear and the earlier he knows who'll be there, the more effective he can be. If something should happen at the last minute and you find you can or can't be there - be sure to keep him informed. Same rules apply to the 12 Hour as the 24. Be on time at the morning meeting, bring all the gear/food/drink /sunscreen (yes, you need sunscreen in the winter months as well as during the summer ... apply early and often), and, as with all the races you work, be alert and be careful. Remember to enthusiastically welcome Darryl Gray, the Sebring Photographer who is working on a photojournalism piece spotlighting the workers, for possible inclusion in National's SportsCar Magazine. And, while you're at it, be aware of where the cameras are in your corner ... don't be scratching or doing something you wouldn't want your Mama to see on TV or on the Jumbotron at the track!

INTROSPECTION: Last year and this year, we've had the best of times...and the worst of times. We lost several good friends, near and dear to all of us ... and we still have folks struggling with serious illness and survival. Whether you're among the afflicted or close to those who are, it's so important to concentrate on what's important in life...kindness, friendship, sharing and our CFR family. It makes a lot of small annoyances and gripes seem really unimportant. Tell people you care, help where needed whether asked or not - and hug often. Never put off a kind word or a caring thought - if nothing else, we're painfully aware that life is too short. Of course, this applies to our racing family ... but take an extra moment and apply it to your family and friends too. Please, thank you, and I love you said with feeling can never be expressed too often. It's not too late to add this to your New Year's Resolution - and it's definitely one to make and keep throughout the year.

A VISUAL: Now we all bemoan the rising cost of all kinds of insurance, and we look for every possible deduction. That said, we recently renewed our Defensive Driving class to receive a credit on our car insurance. We joined all the Duffers/Dufferettes and settled in for two long mornings of class (no test...now that's a plus!) Picture in your mind, Jerry sitting there being told how to drive. Now doesn't that bring a smile to your face? My main job was to keep him from snoring when he fell asleep! But we got our insurance discount! Actually I've also considered trying to get Motor considered a protective device on our Homeowners policy - kinda' like a home pit bull. Unfortunately the cat is a complete wimp and tho' he does bite, he only bites people he knows. Also, our insurance agent is wise to my tricks.

PASSOR BEAR-ON THE MOVE: Passor has passed from me to Joe McKeag, and is now on his way to offer cheer and support from all of us to CFR Steward, Don Sommers. Best wishes to Don, Marty and the Sommers family. Our thoughts and prayers are with you.

LIFE COMES AT YOU FAST: (used by Nationwide Insurance), is quite appropriate. It's been a busy time for all of us here at the homestead and this column must be short..and hopefully sweet this month. I look forward to 'talking' with you more at length in the March issue of the Checker.

'Til next month... a Coca Cola slogan to remember...Live each day like you want an encore!

Columns





Ted's Technology, Trivia & Tidbits

Ted Glaser

Technology and Business:

Forced-induction is a concept which pre-dates the automobile. America's Francis Roots patented a pump system designed to increase the power of blast furnaces as long ago as 1860. As early as 1900 Gottlieb Daimler obtained a patent for a similar idea in relation to automobile engines. He was followed down the same route by Louis Renault and the first "supercharged" engines began appearing in racing in the early years of the Twentieth Century. World War I played a big role in the development of the concept as engineers sought more power for their aeroplanes and in the years that followed supercharged engines began to invade the racing world. Mercedes-Benz led the way in Europe while Harry Miller's engines dominated in America.

Turbocharging developed as an alternative solution - superchargers were mechanically-driven while turbochargers are driven by exhaust gases. The idea was first patented in Switzerland in 1905 by Alfred Buchi but its development was slow and largely linked to the growth of aviation as turbocharging enabled planes to fly at higher altitudes. During World War II there was much development and turbo engines began to appear in land vehicles in 1949 with much success in trucks although in 1952 Fred Agabashian qualified for pole position at the Indianapolis 500 using a Cummins diesel turbo engine. It would be 10 years before the first turbocharged production cars appeared, the first being the Oldsmobile Cutlass Jetfire and Chevrolet's Corvair. They were not very reliable and while turbocharging continued to be used in racing, notably with Offenhauser and Porsche CanAm engines, it was not until the 1970s that BMW took the concept back to road cars with the launch of the BMW 2002 Turbo in 1973 and the Porsche 911 Turbo in 1974. Renault led the way in

F1 in 1977 and in the years that followed development was such that a 1.5-litre turbo engine could be made to produce an astonishing 1500hp. In the end the FIA had to step in and ban turbochargers in order to cut the costs in F1.

Diesel engines were first invented in the 1890s by Germany's Rudolf Diesel and were used in many forms of commercial vehicle although as early as 1931 a Cummins Diesel ran non-stop in the Indianapolis 500, finishing 13th, on the same lap as the winner. As previously mentioned a turbodiesel took pole position at Indianapolis in 1952 but the first commercial turbodiesels appeared only in 1978 with the Mercedes 300SD and the Peugeot 604 which followed in 1979. As gasoline prices rose, diesel cars became more economically viable and as sales increased so did development and in the 1990s turbodiesels were raced in touring cars, notably with BMW winning the Nurburgring 24 Hours with a 320d. In recent years the technologies have been applied in sports car racing with Audi winning the Le Mans 24 Hours this year, the first diesel-powered victory in the French classic. Peugeot is now trying to achieve the same thing and earlier this summer the British-based earthmoving company JCB set a new diesel land speed record, achieving 350.092mph with Andy Green at the wheel.

The increasing awareness of environmental issues has given the turbodiesels an additional boost. Diesel engines not only get 40% more miles per gallon than gasoline engines but they produce very little carbon monoxide. They do produce particulate matter (soot) if the engine is not properly tuned although the development of electronic injection systems has reduced this significantly.

When Rudolf Diesel first revealed his prototype engines in the 1890s these ran on peanut oil and as early as 1912

Diesel argued that the use of vegetable oils for engine fuels might one day become "as important as petroleum and the coal-tar products of the present time". That now seems to be coming true as engineers look at what can be achieved using biodiesel rather than petrodiesel.

Biodiesel can be obtained from vegetable oil or animal fats which can be mixed with petrodiesel in any amount in modern engines. The most common mix is 20% Bio due to cost. It is biodegradable and non-toxic, and has significantly fewer emissions than petroleum-based diesel when burned. Biodiesel functions in current diesel engines and could in theory supplement fossil fuels as the world's primary transport energy source. Although it is currently more expensive to manufacture the price should reduce as economies of scale kick in and governments use subsidies to encourage users to switch away from petroleum. It is seen as the fuel of the future.

Helping the automotive industry to develop turbocharged biodiesels would be a major step for F1 in terms of the sport's relevance to the automobile industry. It would advertise the products and perhaps offer new scientific developments that could be applied to production cars. Certainly such work would have more ultimate value than the current gas-guzzling, high-revving 2.4-litre V8s that are used today.

Toyota employs 27,000 people in Manufacturing in North America.

Chrysler's 3-year cost-cutting effort resulted in 35,000 job cuts and seven plant consolidations - plus reductions at five more facilities - between 2000 and 2004.

Toyota spends \$8 billion/year on R&D, while GM allocates \$3.5 billion.

As of DEC 31 2006 GM will have bid farewell to 34,000 of 112,800 hourly

workers with an attrition program that sets the stage to close nine U.S. assembly plants and eliminate shifts in at least four others by 2008. As part of its North American turnaround plan, GM will idle the No.1 line at Spring Hill, ending the production of Ion small cars in late March. The Saturn Vue CUV, built on Spring Hill's No. 2 line, also will cease production in 2007. A redesigned Vue for the '08 model year will be built in Ramos Arizpe, Mexico.

Skip Barber's Driving Schools located at Laguna Seca, Limerock, Sebring, Daytona and Road America graduate over 7,000 drivers each year. The Racing Schools graduate more than 5,000 drivers at twenty different racetracks in the US.

Trivia:

1931-1934 - The original ALFA-Romeo 8C wins Le Mans four years running. ALFA-Romeo will attempt a repeat in GT2 with the current 8C in 2008.

1982 - Total U.S. light-vehicle sales fell to only 10.5 million units, a 39% drop from the record set four years earlier.

Ford's stock price dropped 70%. By their 1985 launch the Taurus and Sable got completely different sheet metal - no badge engineering. The station wagons even got unique bodyside apertures. Three 3-time Formula 1 champion Jackie Stewart was brought in to hone the Taurus' driving dynamics. By 1987, Ford posted a \$7 billion pre-tax profit. That's \$23 billion in today's dollars.

Crystal Ball:

2007 - Pirelli's centenary year in motorsport, but a lower level of on-track activity both in Europe and US will allow it to concentrate it's product development and R&D programs in Europe, specifically the FIA GT. It is unknown how this will affect Aston-Martin and Panoz chances in ALMS races in '07 as well a signage around various race courses. The '08 program will be announced sometime before the end of this year.

2007 - In March, Saturn Ion production ends at Spring Hill TN and the Vue moves to Mexico. GM will spend \$225 million to retool for future production.

2007 - Possible September or October IRL street race in Biloxi MS.

2008 - Honda plans to build a new \$550 million assembly plant near Greensburg, IN, and start production in fall of 2008. Honda & Accura sales combined for a year to year 3.8% increase as of OCT '06.

2008 - General Motors Corp.'s OnStar telematics service says up to 500,000 customers will lose service due to a major infrastructure switch from analog to digital networks

2008 - Ford is expected to shed some 10,000 salaried and 30,000 hourly positions and shutter 16 plants by the 2009 model year.

2010 - North American small CUV production to grow from 412,918 units in 2006 to 784,628 in 2010.

2013 - J.D. Power & Associates predicts Hybrid Eve will have less than a 5% share of the U.S. market.

See you at the races!

Winter Vacation in Sebring

Bill Martin

The Big Bore Group was large - 49 Cars Qualified



The Jaguar of 2006 GT-1 Champion Phil Simms



Action in Turn 17A



A nice little street ride



Bill Ladoniczki and Don Bodin in Turn 1



Start of the Spec Racer scrambles



Post Race Impound



Talk about the wrong way on a one-way street...



Turn 15 Corner Crew at the ready





Spec Miata action in Turn 17A



Dave Donovan motors through Turn 15



Nothing like a little nudge from your friend - Errol Tucker and Chis Whitney



Mechanical misfortune befalls Glen Reidler



The beautiful Formula A of Dominick Muermans



Derek Whitis tries a new line in Turn 15



Nope, somebody shut gate this way



pitstop



Waiting for the stop



A little prying here and there.....



Tom Ellis meets the Turn 1 wall up close and personal



And it's back into the fray



After an encounter with the wall, Ed Braswell tries a Turn 1



Race and Worker Action at Sebring

Darryl Gray













**CENTRAL FLORIDA REGION
Restricted Regional/SARRC/Vintage
February 24-25, 2007
Sebring International Raceway
Sanction No. 07-RS-26-S**



Chief Steward..... Barney O'Connor
Asst. Chief Steward..... Bob Shafer
Asst. Chief Steward..... Bob Windisch
Asst. Chief Steward..... Bob Henderson
Asst. Chief Steward..... Grumpy Esau

Asst. Chief Steward – Safety..... Bob Hayward

Chairman S.O.M. Barbara Magnuson
Steward of the Meet Pete Magnuson
Steward of the Meet Sandy Jung
Steward of the Meet Smokey Harper

Event Coordinator Charlene Gunn
Registrar Deanna Harry
Safety Scrutineer Bill Eveland, Sr
Timing & Scoring Lee Shafer
Flagging & Communications Matt Coyne
Grid Marshal Tim Murphy
Pit Marshal..... Gloria Theen
Starter..... Dave Fredrick, Jr
Sound Control..... Berta Sager
Course Marshal Bob Anthony
Paddock Marshal Charlie Leonard
Medical Director..... Dave Langston
Pace Car..... Jack Ragaglia
Regional Executive Rick Balderson
Race Board Chairman Robin Langlotz

~~~~~

**Group 1: Vintage Races 1, 9**

**Group 2: DP, EP, FP, GP, HP, GTL, SPU, LEG Races 2, 10**

**Group 3: SM Races 3, 11**

**Group 4: SRF, FV, F500 Races 4, 12**

**Group 5: ITB, ITC, SSB, SSC, T3 Races 5, 13**

**Group 6: FA, FC, FF, CF, FM, FS, CSR, DSR, S2000, FSCCA, SRSCCA, F1000 Races 6, 14**

**Group 7: GT1, GT2, GT3, GTA, AS, SPO, T1, T2, ST, BP, ASR, Races 7, 15**

**Group 8: ITR, ITS, ITA, IT7 Races 8, 16**

**Friday, February 23, 2007**

Test Day – Sebring International Raceway open test day. This test day is provided by SIR and not covered under event sanction. Info at [www.sebringraceway.com/testing\\_days.lasso](http://www.sebringraceway.com/testing_days.lasso)

5:30pm - 8:30pm **Registration**  
7:30pm - 8:30pm **Late Entries**  
5:30pm - 8:45pm **Tech Inspection**

**Saturday, February 24, 2007**

7:00am - 11:30am **Registration**  
7:30am - 11:30am **Tech Inspection**

8:00 am **Green Course**  
Practice - Groups 1 - 8, 15 minute sessions running consecutively , with a worker break where needed.  
  
Qualifying - Groups 1 - 8, 15 minute sessions running consecutively with a 1 hour **Lunch Break/Drivers' Meeting** as close to noon as event progress allows.  
  
Race 1 - 8 laps  
Races 2 –3 30 min SARRC Races with a worker break where needed  
**Secure Course**  
5:30 pm **Social Event**

**Sunday, February 25, 2007**

7:00am - 7:30am **Motorsports Ministries Chapel**  
7:30am - 11:00am **Registration**  
**Tech Inspection by appointment only**

8:00 am **Green Course**  
Races 4 - 8, 30 min SARRC Races, with a break where needed with a 60 minute **Lunch Break at approximately noon.**

Races 9 - 16, 8 Laps each, running consecutively with a worker break where needed.

**Secure Course**

5:00

All times are approximate. Listen to PA for official changes. It is advisable to attend registration Friday.



## SUPPLEMENTARY REGULATIONS

### Sanction No. 07-RS-26-S

This event is held under the 2007 General Competition Rules, based on the 2007 GCR and Category Specifications, as amended for 2007 per "FASTTRACK", and the current SEDiv SARRC Rules.

**REGISTRATION:** Drivers can register for the race online at [www.DLBRacing.com](http://www.DLBRacing.com). Drivers without internet access must complete a paper entry form and mail with entry fees to the Registrar, Deanna Harry, 2981 Lakeview Dr, Sebring, FL 33870. Make checks payable to Central Florida Region, SCCA. Second driver must submit separate entry form and \$30 fee. Second drivers added, or changed, at the track, will be assessed a late fee. A \$25 fee will be charged for any check returned by the bank. A full refund will be made if the entry is withdrawn prior to Tech or if a no show, your check will be destroyed. If you do not go to Tech, you must notify the Chief of Registration, BEFORE YOU LEAVE THE TRACK, in order to receive your refund. Phone/fax entries will not be accepted. Registration will be held in the CFR building located to the right of the main entrance to the raceway. Do not mail entries by any method that requires a signature upon delivery.

**ENTRY FEE PAYMENT:** Drivers who complete their registration online, via the [DLBRacing.com](http://DLBRacing.com) website, will have the option of paying by check/money order, or by credit card at the time of registration. Entry fee payments for online registrants not received by the pre-event registrar within 5 days of completion of online registration, may result in the cancellation of your entry, or the assessment of late fees. Credit Card payment option is available only for those drivers/entrants who complete their registration online, via the [DLBRacing.com](http://DLBRacing.com) website. Credit cards will not be accepted for drivers submitting paper entries, or for entries received at the track.

**PASSES:** Each entry receives four (4) free pit passes, INCLUDING THE DRIVER AND ENTRANT. Additional passes may be purchased at Registration for \$5 each. Guests of the region may purchase their VIP pass at the membership window for \$5. VIPs are not allowed in hot areas. Workers, guests, & crew (all participants) must sign for their own passes and must arrive while registration is open. Workers and members are limited to one guest each. Worker license and membership card must be presented at registration.

**DRIVER ELIGIBILITY:** Drivers must be a member of the SCCA and have a current SCCA National, SCCA-FIA or SCCA-Regional license or a valid SCCA-Novice Permit to participate in this event. If you do not have the proper credentials it is your responsibility to contact the Registrar prior to the event.

**CAR ELIGIBILITY:** Competition is open to all cars conforming to the GCR, as amended. IT7, GTA, CF, SPO, SPU will compete under the current SEDiv approved rules. Trucks, in any configuration, are not permitted to compete in any class. ALL CARS ARE REQUIRED TO USE AMB TRANSPONDERS. A limited quantity of transponders will be available for rent.

**VINTAGE:** Cars must comply with Central Florida Region vintage competition rules. Drivers must comply with vintage participant conduct guidelines. Drivers must have a valid SCCA membership and SCCA competition license.

**SARRC DESIGNATION:** SARRC patches must be worn on the driver's suit above or below the SCCA patch or in the same area on the side opposite the SCCA patch. SARRC decals must be displayed on each side of the car.

**COMPETITION NUMBERS:** SEDiv permanent numbers will receive priority assignment when possible, depending on class groups, for entries received by February 14, 2007.

**TIMING & SCORING:** Driver changes must be made prior to the start of the first race each day, must be coordinated through registration, and will be assessed a \$100 late fee.

**TECH:** All drivers must present helmet, logbook and completed tech card to TECH.

**SCALES:** Will be available at Tech Saturday 10:00 am – 2:30 pm. Scales will not be available for other participants during impound. Scales may be made available at other times at the discretion of the Chief of Tech.

**RADIO FREQUENCIES:** Frequencies: 464.525, 464.975, 464.675, 464.825 and 461.200 are guarded, and not to be used by any competitor/visitor.

**IMPOUND:** The first three (3) finishers in each class must report to impound immediately following the completion of their SARRC race. Cars will be weighed and impounded for a minimum of thirty (30) minutes.

**PIT LANE:** Pit lane speed shall not exceed 40 mph. Violators may be penalized.

**SOUND CONTROL:** Sound readings will be posted near T&S.

**INSURANCE:** Participant insurance will be provided in at least the minimum amounts required by the SCCA.

**RESULTS:** Qualifying and Race Results will be posted at the T&S building. Final Results will be posted to the CFR website within 7 days following this event.

**COURSE:** Sebring International Raceway is a 1.7 mile road course. The Club Course.

**PROVISIONS:** Camping is allowed in the paddock on Friday and Saturday nights. Water and electricity are available in limited areas of the paddock. A \$20 charge for electricity will be assessed to all those parking in areas with electric access, even if you do not utilize this service. Fuel will be available at the track. Tire vendors typically in attendance are: COMPETITION TIRE SOUTH (904) 274-5332; APPALACHIAN RACE TIRES (865) 681-6622. Safety Equipment and racing products: SAFE-QUIP (813) 643-7222. Do not leave used tires at the track.

**PADDOCK PARKING:** Do not park parallel to main infield roads and fences. Failure to follow direction of CFR officials may result in denial of your entry.

**CLOTHING:** Long pants, sleeved shirts, closed shoes must be worn on the GRID (after the 1-minute warning) and at all times in the PITS & PIT ROAD!

**TROPHY:** Trophies will be awarded in accordance with the GCR for races 2 through 8 and to first place class finishers for races 10 through 16. Location of trophy distribution will be announced. Trophies may be distributed even if final results are not available.

**EMERGENCY CALLS:** CFR has an emergency number at the track (863) 655-3033. In case of emergency and you cannot reach this number, call the Highlands County Sheriff Office at (863) 385-5111. Inform the Sheriff's office that the party you need to get in touch with is at Sebring International Raceway.

**GENERAL RULES:** Animals are not allowed on SIR premises. The consumption of alcoholic beverages in the facility is forbidden until all racing activities have concluded for the day. ATV's, bicycles and motorcycles are permitted in certain areas provided they are used in a safe manner and operated ONLY by licensed drivers. Skateboards, skates, rollerblades, micro/mini racers and go-peds are NOT permitted. No person will be admitted into the raceway without the proper credentials. Absolutely NO bedding new brakes or testing of cars on infield roadways will be permitted. Violations will result in immediate ejection from the premises. This penalty will be enacted for all offenses, with zero tolerance. The raceway gates will not be opened until 5:00pm Friday.





**CENTRAL FLORIDA REGION**  
**Restricted Regional Races/SARRC/Vintage**  
**Cabin Fever**  
**OFFICIAL ENTRY FORM**  
**SEBRING INTERNATIONAL RACEWAY**  
**Sanction No. 07-RS-26-S**  
**February 24-25, 2007**



**Entry Fee ONLINE ONLY.....\$160**

**Entry Fee Paper Entry.....\$180**

Second driver.....(add).....\$30

Additional Fees:

SRF, FSCCA, SRSCCA .....\$10

Late Fee: online after 2-18-07 .... \$50

Late Fee: paper entry after 2-14-07 \$50

Late Fee: all rec'd after 2-22-07..... \$100

**Held under**

2007 SCCA General Competition Rules

Paper (mailed) entries postmarked after Feb 14, 2007 will be considered late. Do not send entries by any method that requires a signature upon delivery.

**Make checks payable to:**

Central Florida Region – SCCA  
Deanna Harry, 2981 Lakeview Dr  
Sebring, FL 33870

**Register ONLINE at**  
**[www.DLBRACING.com](http://www.DLBRACING.com)**

**Credit card payments**  
**available only with Online**  
**registration. All paper**  
**entries, or at track entries,**  
**must pay via cash or check.**

Deanna Harry  
email: [sccacfr@aol.com](mailto:sccacfr@aol.com)  
863-382-4226 (no calls after 9pm)

Second driver MUST register online or submit a paper entry along with the \$30 fee.  
If submitting a paper entry via the mail complete all spaces, except those labeled Official Use Only

**Register online at [www.DLBRacing.com](http://www.DLBRacing.com)**

**If you don't have an account at this site, you will need to create one. Once logged in, go to the calendar, make sure the month is set to February 2007 and that you are searching on Central Florida Region, All event types.**

**Select the notepad icon next to the event on the calendar page. This will bring up the online registration form. Select the appropriate entry fee, class and number from the drop down menus. Complete crew and driver information directly into the form.**

**Be sure your crew information is complete and up to date. You can log in to your registration at anytime during the open registration period and change your personal information, car number and crew. If the car number you want is not available, check back into the DLB site after permanent numbers, not taken, are released. Read the supps to find the date this will happen. It's easier to change it before you get to the track.**

If you have a permanent number, and it is not available, register with any available number. Then email Robin at [cfrreg2@aol.com](mailto:cfrreg2@aol.com) to establish the number assignment to your DLB account.

If you need further assistance using the program, go to the CFR website at [www.cfrscca.net](http://www.cfrscca.net) and refer to the CFR Guide to Online Registration, or email Robin at [cfrreg2@aol.com](mailto:cfrreg2@aol.com) or Deanna at [sccacfr@aol.com](mailto:sccacfr@aol.com).

If you do not have internet access, contact Deanna at 863-382-4226 to obtain a paper entry.



# ACTION PERFORMANCE SPEED & CUSTOM



Use our 25 years of experience in the high performance business! Spend your time doing what you do best and let us get you the parts you need when you need them.

We have an extensive in stock inventory with parts for all classes, IT to GT, but if we don't have it we can get it fast. Let us know what parts you need, problem you are trying to solve, and when you need it all - We will make it happen! We go above and beyond to serve your racing needs.

**Shipment right to your door!**

We have an extensive inventory of Extreme Racing Products (XRP) hose and AN fittings to plumb any racecar.

Don't pay racetrack prices for fuel! We carry Sunoco Race Fuels 110, 114, 116 and methanol.

High-Tech becomes affordable. Wide band O2 sensor allows you to accurately adjust your air fuel ratios without a dyno. Meter also has data logging capabilities, all at \$399!

We carry brake pads for all popular racing calipers. OE caliper racing applications are no problem.

Action Speed & Custom is a warehouse distributor for Eibach Springs.

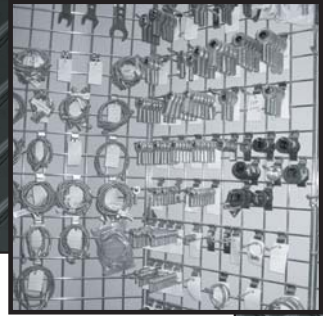
We have a wide variety of Kirkey racing seats covers, and other seat accessories so you can find the perfect combination for you and your car.

231 North Nova Rd., Daytona Beach, FL 32114

386.252.2632 877.537.RACE

Fax: 386.238.0777

**[www.ActionSpeedandCustom.com](http://www.ActionSpeedandCustom.com)**





**From  
Roll Bars  
to  
Dyno Testing ...**

**We can help you go  
racing.**

**Call us or visit our website:**

**(407) 282-9999**

**[www.irishmikes.com/imracing.htm](http://www.irishmikes.com/imracing.htm)**






**JIM LOFTIN**  
 Volkswagon Transmissions  
 Formula V - Beetle - Off Road  
 1380 Culbreath Rd.  
 Brooksville, FL 34602  
 352-848-0462




JR Russell                      15153 Kittrell Dr.  
 General Manager              Spring Hill, FL 34610

Phone: 727-856-7564 Fax: 208-445-5630  
 Cell: 727-992-8219 Email: 2rt@roxannesheaders.com  
 www.roxannesheaders.com



Exhaust Systems & Collectors  
 Stainless Steel - Carbon Steel  
 Proven performance - By Racers for Racers  
 In stock for most Formula Vees



863-385-4448  
 863-386-0793 (Fax)  
 5272 US Hwy 27 South  
 Sebring, Florida 33870



**ORDER YOUR CFR  
 MERCHANDISE**

Sunscreens, license plates, lanyards,  
 hats, and more  
 Call 407-851-7157  
 or Fax order to 407-855-4131  
 2504 Overlake Ave. Orlando, FL 32806



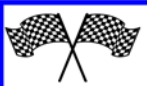
Ryan Wyatt  
 Senior Financial Advisor  
 Kaltbaum & Associates  
 Member NASD/SIPC  
 Securities Offered Through  
 Capital Securities of America

Free Portfolio Review, 401k, IRA,  
 Education, Equities, Mutual Funds,  
 & Income  
 Toll Free 888-422-5559  
 Fax: 407-648-1472  
 rwyatt@kaltbaum.net

**GEORGE C. MOENCH, M.D.**  
**SCCA Physicals**

FAA Medical Examiner  
 (St. Petersburg Area)  
 #4 5702 Gulfport Boulevard So.  
 Gulfport, FL 33707

727-347-7474  
 If no answer call:  
 727-384-5354



**FLORIDA  
 PERFORMANCE MACHINE**



COMPLETE MACHINE SHOP  
 ENGINE DYNO FACILITY  
 RACE CAR PREP  
 REPAIRS & MORE  
 407-324-7223

www.floridaperformance.com  
 e-mail: hendricksracing@msn.com  
 Sanford, FL 32771

**FSCCA RENTALS**

Arrive and Drive Racing  
 Reserve your car today!

Also available:  
**COMPLETE  
 CAR PREP & TRANSPORT  
 FORMULA CARS, INC.**

Shop: 352-383-5217  
 Cell: 407-257-7764



7723 ELLIS RD. UNIT E., MELBOURNE, FL 32904  
**PERFORMANCE & SUSPENSION SHOP**  
 WITH INSTALLATION TIRERACK,  
 INTERCOMP CORNER WEIGHTING,  
 CORBEAU SEATS AND HARNESSSES,  
 EIBACH SUSPENSION,  
 AND MORE ... BOLT ONS AND BEYOND!  
 (321)768-2000 WWW.TRICKPRO.NET

## TWIN CAM *Sportscars*

Steve Smith  
 Vintage British Car Specialist  
 6085 Deacon Road  
 Sarasota, FL 34238  
 941-923-0024

F-500 and Formula SCCA  
 Rentals & Preparation  
 Trackside Service  
 Arrive & Drive Service  
 Rentals For Nationals-Regionals-Schools

## Dolphin Motorsports

561-848-8068 (Days) 561-848-1350 (Eve)  
 1-800-759-0064  
 4574 Dyer Blvd.,  
 WPB, FL 33407

## Spec Racer Ford Rental

Race Prep/Trackside Service  
 Car Storage/Bodywork  
 Arrive & Drive (your car or ours)  
 Regional, National, or Pro Races & Schools

**SEI Motorsports.com**

386-295-5252, 386-238-0139 (Fax)  
 Daytona Beach, FL

FACTORY  
 TRAINED  
 TECHNICIANS



**SOLO & RACE PREP**  
 Performance Parts Available  
 SCCA Member Discounts  
 15% off List - any OEM Part  
 Free UPS or Delivery  
 on CFR orders over \$100  
 Daytona Mitsubishi  
 510 N. Nova Road  
 Daytona Beach 32114

Business: 904 252-7000 Fax: 904 238-1006

## Low Performance Automotive

USED MAZDA PARTS  
 RED LINE OIL  
 941-924-8597  
 5640 SARAH AVENUE  
 SARASOTA, FL 34233

## Economy Inn

Every room has:

Free High Speed Wireless Internet,  
 Free HBO, Free Local Calls,  
 Free Speed Channel,  
 Microwave, Refrigerator, A/C

2919 US 27 South  
 Sebring, FL  
 863-385-6111



*Specializing in small business  
 marketing & promotion*  
**Logo Design - Business Stationery**  
**Website Design**  
**Website Maintenance**  
**Sales & Marketing Planning**

Jeanne Daly Smith jdsmith@mymanagerusa.com  
 407-340-8296 www.mymanagerusa.com



Winter Haven, FL  
 863-324-4539

ITS-IT7-EP-SM  
 MAZDA SPECIALISTS  
 SERVICE, PARTS, RENTALS  
 ARRIVE & DRIVE PROGRAMS  
 CHASSIS DYNO  
 EMAIL: MVSXR7@AOL.COM  
 WWW.ISCRACING.NET



Alan Steinmetz  
 President

Custom quality finishes -  
 wide range of in-stock colors.  
 Ceramic coating for headers,  
 exhaust pipes and much more.  
 Vibratory polishing.  
 SCCA member since 1976.

5301 W. Crenshaw St. 813-882-8091  
 Tampa, FL 33634 Fax 813-249-8226



[www.IrishMikes.com](http://www.IrishMikes.com)

Race Prep, Dyno,  
 Laser Alignment & Corner Weights  
 407-282-9999  
 1624 N. Forsyth Rd. Orlando, FL 32807



3009  
 weslenn  
 drive  
 winter garden  
 florida  
 34787

**Jon & Connie Swanson**  
 407.654.4060  
 E-Mail: [teamswanson@aol.com](mailto:teamswanson@aol.com)  
 also live events!!







• Spec Racer Ford • **PROFESSIONAL RACE CAR PREP**  
 • Formula Mazda • **Rentals and Arrive & Drive**  
 • Formula SCCA • **COMPETITION DATA SYSTEMS**

Call Now About Our Discounted Multi-Race Packages!  
 Deland, Florida

**386-738-9955**

*Strictly* **BRITISH**  
**MOTORSPORTS**

Maintenance • Repair • Restoration  
 Competition Preparation  
 Parts & Accessories

2312 Clark Street, B 8-9  
 Apopka, FL 32703  
 407-523-CARS (2277)

*Robin Hanger's*  
**Car Shop Trailer Sales**  
**386-258-1445**

Short and Long Term Financing!! **BAT & MOTIV**

~Toy Hauler Living Quarters ~Cargo/Utility Trailers  
 ~Motorcycle Trailers ~Dump Trailers  
 ~Open and Enclosed Car Haulers ~Custom Orders Welcome!

**WWW.BESTPRICETRAILERS.COM**  
 Mention this Ad For your SCCA Discount



**PERFORMANCE  
TIRE & WHEEL**

Sales & Installation of Custom Accessories  
 Street / Track Alignments  
 Corner Weighting  
 Hunter Road Force Balancing  
**PBOC trackside support with**  
 Hoosier Toyo Dunlop Yokohama  
 Pirelli Goodyear Avon race tires  
 Street tires - all brands available!

630 S. Volusia Ave. Orange City, FL 32763  
**386-228-2500**

**SPEEDCOM**  
 COMMUNICATIONS



Trusted Worldwide by  
 Professional Teams  
 for Reliability,  
 Quality & Service

(386) 740-0313  
**www.speedcomracing.com**

**FujiRacing**

**JAPAN PERFORMANCE PARTS**

**HONDA-MAZDA**

IRTB's Individual Racing Throttle Bodies  
 Engine Management - Fuel Components  
 Performance Clutch & Flywheel Packages  
 Coilovers - Shocks - Exhaust Systems

**IDEMITSU ROTARY RACING OIL**

**www.fuji-racing.com**  
**fujiracingusa@aol.com**  
**352-217-5554**


# Smoke Your Clutch?

No need to buy a new clutch after every race.

We grind clutch plates to .003" flat and .002" parallel.



Florida statewide good UPS rates.

Call for a code. 

## 1-888-GRIND FL

**B & B Manufacturing Company, 8100 Bryan Dairy Rd., Largo, FL 33777**



**Race at the Track – Stay at the Track**  
Sebring's only Hotel & Spa located on the legendary hairpin  
turn at

"Sebring International Raceway"  
Arrival is hassle-free. Relax. We've been expecting you.  
Preferred SCCA Rate is available

**Esperante Restaurant**  
A full service Restaurant serving both American and  
Continental cuisine.

Reservations for "Preferred Rate" must be made two weeks  
prior to event

Reservation Call- (888) 625-RACE (7223)  
150 Midway Drive Sebring Fl 33870  
[fourpoints.com/sebring](http://fourpoints.com/sebring)



## INN ON THE LAKES

*SEBRING'S FINEST HOTEL*

*RACE AT THE TRACK BY DAY -  
AT NIGHT GREAT FOOD AND A LAKESIDE STAY*

*Thank you for your support.  
We appreciate your business.*

THE HOME OF:



GOURMET FOOD IN A CASUAL  
LAKESIDE ATMOSPHERE

## SPECIAL RATES FOR SCCA CLUB MEMBERS

For reservations and information call:  
(800)531-5253 or (863) 471-9400  
3100 Golfview and Highway 27  
Sebring, Florida





*We make it easy to take it easy!*

## WHERE SCCA CLUB MEMBERS FEEL AT HOME

### Ask for the special SCCA Rate

- \* Free Continental Breakfast
- \* Free unlimited phone calls
- \* Located next door to the Daytona International Speedway
- \* Digital voice mail
- \* Full cable with premium movie channel
- \* Pool and whirlpool spa
- \* Coffee makers, irons, boards & hairdryers in every room
- \* Free shuttle to Track / Airport



1715 West International Speedway Blvd. Daytona Beach, FL 32114

1-800-593-0344 or 386-257-4030

[www.hoteldaytona.com](http://www.hoteldaytona.com)

rates subject to change without notice - SCCA rates not valid during special events



## Great Daily and Weekly Rates!

- Wireless High Speed Internet Access
- Fully Equipped Kitchens
- On-site coin laundry
- Premium cable with HBO
- Individual climate control
- Tropical outdoor pool

220 Bill France Blvd.  
Daytona Beach, FL 32114

**386 274-4200**



**MGB '65** - British Racing Green. Sebring fiberglass flares, professionally done. Prather engine, FAST CARS front end; Willwood brakes, aluminum radiator, Quaife differential, full roll cage, Parasport rims, Florida Region Champion 2006. First \$9000 takes it. \$30,000+ invested. Bruce 305-666-5293, or email addlib@bellsouth.net. (1)

**1986 Mazda RX7** - started as an ITS...gutted roll cage, some pipe available for re-use. Could be used as FSP Solo car or EP club racer. Roller, no running gear except for

## Competition Cars

wheels and diff. big brakes, five lug car, no sunroof, aluminum hood, windshield gone, several rear hatches, hole in trunk for fuel cell, hood pins, brake bias adjuster, hub for quick releases welded to steering column, bottom stripped and repainted, engine bay repainted, new delrin bushings and rear steer eliminators. front bushings installed, extra rear cradle and diff, plus other stuff. No rust - good project starter Asking \$550. Contact Michael Dickerson, SCCA Region Development Manager. Call 800-770-2055 ext 358 or email mdickerson@scca.com (1)

**88 RX7 Street Car** - slightly bent by Hurricane Charley. Very nice interior, runs and drives, new clutch, brakes & struts. Could be Race Car or Solo. No title. Call Bill McGavic 863-494-5917. (2)

**1991 Spec Miata** - by Louie

Rivera of RPM Motorsports. Beautiful inside and out and competitive. Red paint w/ twin silver racing stripes. No body damage. Aluminum radiator, Racing Beat air intake, fuel test feature, spoiler, Hawke brake pads, steel braided brake lines, mounted rains plus 4 spare tires, Sparco suede quick release wheel, cam lock seat belts, Ultrashield racing seat with plush cover, plus some spares. \$8900 OBO Call 954-765-3685 or 954-675-8634 (2)

**ITS 73 Datsun 240Z** - ready to race. Needs good driver or perfect for schools. Many spares. 78 Pontiac TransAm - Street car, black/tan 400 eng auto Hurst T-Tops runs good all original. 72 Kawasaki 750 - two stroke triple Motorcycle. Call Pablo at 407-230-6507 (2)

## Street Cars

**1986 Mazda RX-7**. GXL model - loaded. Daily driven, garaged, no wrecks or rust. Original owner, all records and original equipment except for recent

ISC engine rebuild and manual steering conversion. \$3,000. Bob Sieck 321-433-2070, rsieck@cfl.rr.com. (1)

**78 Pontiac transAm** - black/tan 400 eng auto Hurst T-Tops runs good all original. Call Pablo at 407-230-6507 (1)

## Trailers/Campers

**1987 GMC, 14 FT. White Box Truck** - Race car support set up. Renovation for race configuration completed in 2005. Interior designed /built for race car support. All wood floor, walls, and Masonite ceiling with 3-inch fiberglass insulation. Complete electrical wiring, with circuit breakers, switches and electrical outlets installed inside and out. Workbenches and storage space, Craftsman 15 Gallon Air compressor plus space for 8 mounted tires, parts bins, and fuel jugs. Wire wall racks for oil, aerosols, etc., heavy duty

bench vise, and. overhead storage cabinets. "Galley" area with microwave oven. Florescent lighting in ceiling and under front wall cabinets. Clean carpeted floor. Many other storage features. Space for generator under truck. (generator not included). Rear door is a roll up. Truck has a 350 V-8, TBI, and automatic transmission, dually rear axle, two new front tires, many new parts. Engine and transmission are in good condition. Does not burn oil. No AC. Cab area needs some cosmetic work. Odometer reads 98K. Reason for sale, sponsor has purchased new enclosed Featherlite

trailer. Asking \$2750.00 / OBO. Truck located in Cocoa, Florida. Call David Ellis-Brown, Cell 321-698-2286 (D) or 321-723-0130 (E) or e-mail toniand-davideb@aol.com for more details. (1)

**2005 Optima Toter-Home** - 44ft Stacker Pace Shadow GT with Stinger lift. Many Many extras. My loss, your gain. \$232,000 brand new in July of 2005. Buy now for \$187,500.00 - Only 10,000 miles. Email Carlos @ Sobe98@aol.com. (2)

## Miscellaneous

**72 Kawasaki 750** - two

stroke triple Motorcycle. Call Pablo

at 407-230-6507 (2)

Classifieds





---

## Official "Small Print" Information:

*The Checker* is published monthly by the Central Florida Region of the Sports Car Club of America, Inc., 136 Dublin Drive, Lake Mary, FL 32746, (407) 323-8148, and is printed at Osceola Press, 1124 E. Donegan Ave, Kissimmee, FL 34744.

Subscriptions are available to non-Central Florida Region members for \$25 per year to addresses in the United States only. A subscription is included in the Central Florida Region dues charged to its members.

Opinions expressed herein are those of the authors and are not necessarily those of the Central Florida Region, its officers, its members, *The Checker*, or its advertisers.

Permission to reprint material from *The Checker* is hereby granted to all SCCA regional publications with the agreement that full credit be given to the author and *The Checker*.

### **Advertising Rates**

Full Page - \$150/month

Half Page - \$115/month

Quarter Page - \$85/month

Commercial Classified - \$10/column inch AVAILABLE TO CFR MEMBERS ONLY

CFR Business Exchange - \$50/year

Advertisements in the Business Exchange are limited to the full or part time businesses AVAILABLE TO CFR MEMBERS ONLY.

ALL ADS MUST BE PREPAID AND MUST BE RECEIVED AT *THE CHECKER* ON OR BEFORE THE 15TH OF THE MONTH PRIOR TO THE DESIRED PUBLICATION DATE.

### **Classified Ads**

Personal, non-commercial, classified ads without pictures are free to CFR/SCCA members for two (2) issues. All personal ads for out-of-region SCCA members will be \$5.00 for two (2) issues.

To run a photo with any classified advertisement add \$5.00 per photo for every two-issue run.

ALL ADS MUST BE PREPAID AND MUST BE RECEIVED AT *THE CHECKER* ON OR BEFORE THE 15TH OF THE MONTH PRIOR TO THE DESIRED PUBLICATION DATE.

To avoid having your information rewritten, LIMIT THE SIZE OF YOUR AD! Include your membership number and payment with your ad request. We prefer to receive ads by e-mail at checker@clearlysaid.com, if you cannot send the ad by e-mail please type or print clearly. Send ads that require payment to 136 Dublin Drive Lake Mary, FL 32746, along with payment. Free adds can be sent directly to *The Checker* at 136 Dublin Drive, Lake Mary, FL 32746.

### **Deadline and Other Information**

Articles, photographs and advertisements must ARRIVE at *The Checker* no later than the 15th of the month prior to desired publication. We prefer to receive articles electronically. either on disk or by e-mail. (Save your file in text only format and attach it to e-mail sent to [Checker@ClearlySaid.com](mailto:Checker@ClearlySaid.com). Articles may also be mailed to 136 Dublin Drive, Lake Mary, Florida 32746, or faxed to (407) 323-8148.

Photographs will not be returned unless specifically requested. Label all photos for return and send a self-addressed return envelope with sufficient postage. Allow 6 to 8 weeks for return.

Articles received past the deadline will be placed in the following issue. Articles requiring extensive edits or typing may not appear until the following month even if they meet the deadline.

### **Address Changes**

Call the Topeka office (1-800-770-2055) to notify them of your change. *Checker* mailing labels are generated from the region records, and the region records are updated by the list from the national office in Topeka. Because of delays in receiving those updates you may experience a delay in the receipt of your *Checker*. You may also experience delays if *The Checker* mailing labels were produced prior to your notification.

DO NOT SEND ADDRESS CHANGES TO *THE CHECKER*.

*The Checker*

**RAMADA INN**



**Speedway**

1798 International Speedway Blvd.

**Across From  
Daytona International  
Speedway**

Pool Free ESPN/HBO  
Adjacent to Volusia Mall  
1.5 Miles East of I-95  
(Daytona I-95 Exit 261A)  
Uno's Chicago Bar & Grill

**386-255-2422  
1-800-352-2722**

*Pet Friendly*



**\$67**

*Any SCCA Event  
Subject to availability*

***The Choice of Sebring Racers for over 50 years!***



1610 Lakeview Dr.  
Sebring  
**1-800-423-5939**  
[www.kenilworthlodge.com](http://www.kenilworthlodge.com)

- ◆ Closest hotel not located at the track
- ◆ Refrigerators in every guest room
- ◆ **FREE 5 Premium Movie channels**
- ◆ **FREE** 6 dedicated sports channels including the "Speed Channel"
- ◆ **FREE High Speed wireless internet** access
- ◆ Complimentary deluxe continental breakfast
- ◆ Direct Dial Phones with Voice Mail
- ◆ 80-foot heated pool, Ping Pong, Billiards
- ◆ All Guest Rooms have individually controlled AC

**SCCA Super Low Rates**

Book now for these dates

**1/6/06 ~ 2/24/06 ~ 6/2/06 ~ 7/14/06 ~ 11/24/06**

*Lodge rooms, pool-side efficiencies  
or one bedroom apartments!*





# Join the Club!

Central Florida Region  
Sports Car Club of America, Inc.

## Membership Application

PLEASE TYPE OR PRINT:

- ☐ **\$75 Regular Membership**  
Includes \$60 National dues.
- ☐ **\$27 Spouse Membership**  
Must be legal spouse of regular member.  
Includes \$20 National dues.
- ☐ **\$45 First Gear (under age 21)**  
Includes \$25 National dues. Does not  
include ability to hold Club Racing, PRO  
Rally or Solo1 Competition licenses.
- ☐ **\$115 Family Membership**  
For regular member, spouse and children  
under age 21. Includes \$95 National  
Dues.
- ☐ **\$25 Subscription to *The Checker* only.**

Total membership costs include National and  
Regional dues for one year. Also  
includes one subscription to *SportsCar  
Magazine* and *The Checker* per regular,  
First Gear, or family membership. Mem-  
bership dues are not a charitable contri-  
bution.

**MAIL TO: Membership Chair**  
**Joyce Hayward**  
**457 Drage Drive, Apopka FL**  
**32703**

**407-884-7889**  
**joycehsccl@cfl.rr.com**

Name \_\_\_\_\_

Address \_\_\_\_\_

City, State \_\_\_\_\_ Zip \_\_\_\_\_ County \_\_\_\_\_

Phone (\_\_\_\_\_) \_\_\_\_\_

E-Mail \_\_\_\_\_

First Gear birth date \_\_\_\_\_

Spouse Name, if joining Club \_\_\_\_\_

Children's names and birth dates if Family membership  
\_\_\_\_\_  
\_\_\_\_\_  
\_\_\_\_\_

### SCCA Region Preference **Central Florida Region (83)**

I am interested in the following SCCA activities:

☐ Pro Racing ☐ Club Racing ☐ Rally ☐ Solo ☐ Official

I hereby apply for membership in the Sports Car Club of America, Inc. and its  
Central Florida Region and agree to abide by the bylaws.

Enclosed is my check or cash for \$ \_\_\_\_\_, or

(check one) ☐ Visa ☐ MasterCard

Card No. \_\_\_\_\_ Exp. Date \_\_\_\_\_

Signature \_\_\_\_\_ Date \_\_\_\_\_



**136 Dublin Drive**  
**Lake Mary, FL 32746**

PRSR STD.  
US POSTAGE  
**PAID**  
PERMIT #2047  
ORLANDO, FL